

# 7 Factors Why Customers Choose Yangzhou Jingdu Brush Co. Ltd.



**Y**angzhou Jingdu Brush Co., Ltd is a family owned and operated China-based company, established in 1996. Since its inception, it has focused on processing natural white, black and grey boiled bristle and all kinds of bristle mixtures, as well as manufacturing brush filaments, physical and chemical tapered brush filaments, cosmetic filaments and PBT eyelash filaments.

The company plays a significant role in the region and enjoys great popularity in world market. Referring to its production capacity, Yangzhou Jingdu Brush Co., Ltd can produce around 1000kg boiled bristle and 3000kg brush filaments each day. The company has around 100 employees with 5 engineers and operates a good quality control system.

In its drive to bring its products to the global market, Yangzhou Jingdu Brush Co. Ltd is now able to sell these top products abroad.

**Following are 7 factors why customers choose us:**

## 1. Supply System

### Brush Filaments

All raw material for brush filaments is made from PBT and PET. All the PBT and PET is from Sinopec Yizheng Chemical Fiber Co., Ltd. Each batch of raw material is accompanied by a Quality Certificate.

When the material arrives, we mark it with the item code, the batch number and the date shown on it.

We record the data of raw material and Inspection Certification to the ERP system.

### Bristle

The raw material for bristle is sourced from Yunnan, Sichuan and Guizhou.

We wash, boil and dry the bristle.

They are classified according to colour and tops.

We label the goods with size, colour and tops.

We record all the data and Inspection Certification to the ERP system

## 2. Production Management System

On the table of workers, there are specific instructions showing how to select and sort qualified and non-qualified product. New workers



must be fully trained before they can be officially employed.

Before promoting the worker to more bulk products each worker will make one sample according to the material types. This sample is then used during the bulk production as a comparison until the order is completed.

Each order has its unique production number, from the first to last step. We will use the production number to trace the raw material used, in-process inspection, in which step, to ensure the requirement of the customer. It will also allow us to see clearly what is needed, if necessary, to pay more attention to and so on.

Regular maintenance of production equipment and effective maintenance records.

Each step receives QC checks and following approval will then move to the next step.

## 3. QC System

Each inspector is promoted through from the lowest working level. They have at least 5 years working experience.

They will pick 10 bundles from each layer to check the size and tops and bottoms.

Qualified products will have Qualified stamps on the cardboard.

QC will write the Quality Inspection Form for each item

After packaging they will re-check the weight of cartons again and will pick up two cartons of

each item for double checking.

## 4. Packaging System

5 layer exported standard carton with Tic-Tac-Toe packing strap.

Fumigation-free tray for LCL customers.

All finished products rest on an iron pallet waiting for distribution.

Shipping Mark is applied according to customer requirements.

## 5. Inventory System

All goods are stored on pallets.

Foam fire extinguishers are available in each warehouse.

List labels are attached on each of the goods on the pallets.

## 6. Ex-factory Inspection System

Item quantities are double checked before loading. Carton weights are double checked, picking 10 cartons from the bulk.

## 7. After Sale Service System

Every customer is called for feedback on goods received.

Should defective products be found, we negotiate with customers to give them the best compensation.

If customers propose a defective item, we ask them to take a photo or video to send to us. We check and compare them with the agreed samples. If the item cannot be used, we will make new goods in place of the defective ones. If the item can be used, we will make compensation accordingly.

For further information please contact:

**Yangzhou Jingdu Brush Co., Ltd**

**Sunny Wang, Sales Manager**

**Mob/Whatsapp: +86 13952544522**

**Wechat/Skype: sunnysmile201314**

**Email: sunny@china-bristle.com**

**Visit us at INTERBRUSH 2022!**

®

**JDPONT**





# JINGDU

## -JingDu Bristle and Brush filament -

### Visit us at INTERBRUSH 2022

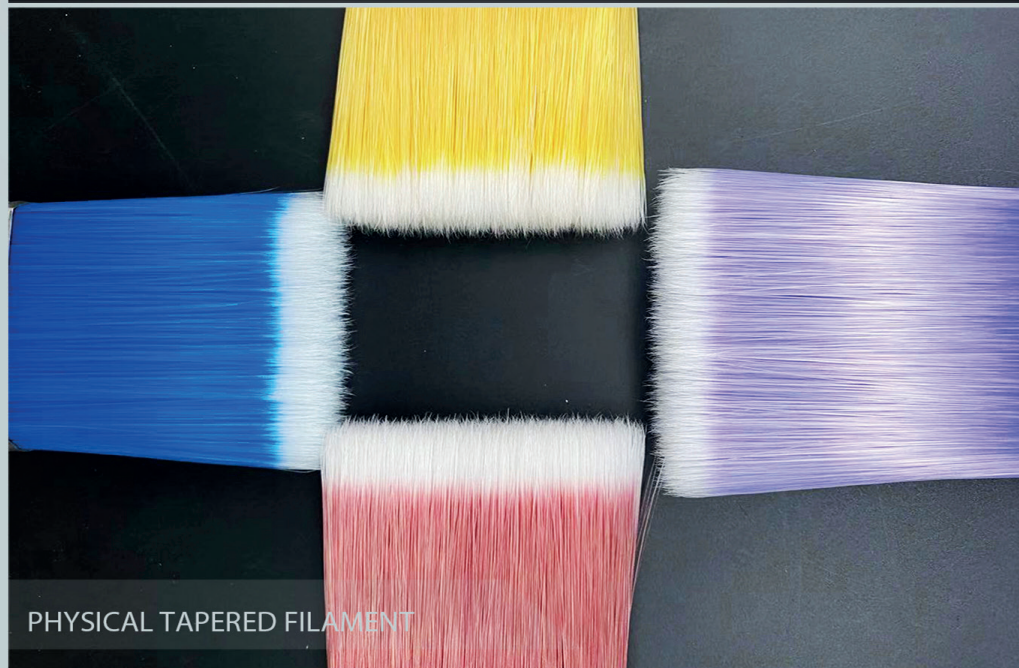
Best Bristle Filament match Best Brush!



PURE BRISTLE AND MIXTURE BRISTLE



IMITATION BRISTLE FILAMENT



PHYSICAL TAPERED FILAMENT



COLORFUL PBT BRUSH FILAMENT

## MAIN PRODUCTS

- 100% natural bristle(white, black, bleached, printed black, grey, or customized )
- 100% natural white boiled bristle
- 100% natural bleached boiled bristle---most for artist brush
- 100% natural black boiled bristle—most for hair brush, polish brush
- 100% printed black boiled bristle
- 100% badger hair bristle—shaving brush
- 100% Printed brown boiled bristle
- 100% natural grey boiled bristle
- 100% boar bristle

- Natural bristle mixture synthetic brush filament
- Bristle color can be white, black, grey, brush filament color can be customized
- Natural bristle imitation filament
- JD SMART A( natural white bristle imitation)
- JD COPPPER A (natural black bristle imitation)
- JD SMART 2(natural white bristle imitation B quality)
- Physical Tapered Filament
- PBT synthetic brush filament
- PET+PBT synthetic brush filament
- PP brush filament Horse tail Goat hair

## CONTACTS US



Mob/whatsApp:+86 13952544522

T: +86 - 514- 86395688  
F: +86 - 514- 86398555  
Wechat: 13952544522

Phone: +86 13952544522  
WhatsApp: +86 13952544522  
Skype: sunnysmile201314

Email: info@china-bristle.com  
Facebook: <http://www.facebook.com/chinabristle>  
Linkedin: wei wang Yangzhou Jingdu Brush Co.,Ltd

[www.china-bristle.com](http://www.china-bristle.com) [www.brush-filament.com](http://www.brush-filament.com) [www.synthetic-filaments.com](http://www.synthetic-filaments.com)

**Yangzhou Jingdu Brush Co.,Ltd**

South Industrial Park,Guocun Town Jiangdu District, Yangzhou City, Jiangsu Province, China